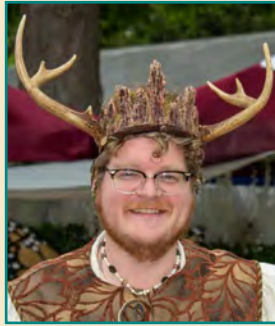


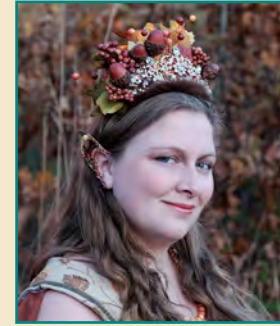
ASK US FOR A QUEST AND EARN OUR FAVOR



Queen Aileen of Summer (she/her)



King Oren of Earth (he/him)



Lady Amber of Autumn (she/her)



Lord Potameer of Water (they/them)



Lady Rosalinda of Winter (she/her)



Lord Tuuli of Air (he/they)



Lady Odeletta of Spring (she/her)



Lord Ignacia of Fire (he/him)



Lord Nox of Shadows (he/they)

Ask us for help throughout the Realm!



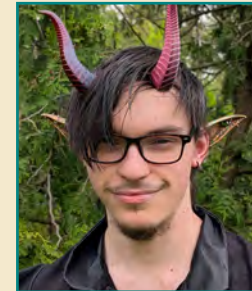
Lady Thistle (she/her)



Lady Spark (she/they)



Lady Snowflake (she/they)



Sir Cro (he/him)



Vesper, Court Jester (he/they)

The Royal Quest



What is the Royal Quest?

Peace reigns in the Magical Realm. With the Lord Shadow and Lady Spring's joyous wedding at last year's Realm, the couple has been too busy with marital bliss to stir up trouble. All seems right and good with the realm.

But beneath the calm, something terrible lurks. Those who listen can hear sinister mutterings planning the downfall of the kingdom. Members of the court are finding themselves missing time, unable to recall what they were just doing, and still others are feeling wicked impulses, urging them to behave in ways they would normally consider vile.

Join other heroic adventurers for key moments to aid a Realm quietly besieged by an invisible threat. Will you find the source of the corruption or watch the court fall victim to the evil within themselves?

(All ages invited to participate! Quest Givers can be easily spotted by the large orange exclamation point over their heads.)

Quests begin at the Throne Room:

11:00 Break the Curse on the Queen's Courtier

2:00 Restore Reason to the Mad Monarch

4:00 Cure the Corrupted Court

Simple Quests of the Magical Realm:

There are always things to do in the Magical Realm. The Royal Court have many things they're trying to do throughout the day. You may be asked to deliver love letters, pull pranks, spy on entertainers, or search the marketplace for lost objects. Those who lend their aid may well be granted the favor of the members of the court.